

THE
**BEATH
BULLETIN**



ISSUE 8

JUNE 2018



Celebrating

40

**YEARS OF
CIVIC WEEK**

A Message from the Chairman of Cowdenbeath Community Council



The Community Council has been advised that work on the Heritage Garden at Brunton Square and the development of the green square will begin this year. Fingers crossed, it will be sooner rather than later. There will be disruption but hopefully folks will be patient and still support the shops in the High Street.

And have you been into our new community centre - the Maxwell Centre - in Stenhouse Street. It looks really good - well worth a visit.

The Civic Week Committee celebrates their 40th 'birthday' this year. The members of the committee have changed over the years but as with past members and their volunteers, the current committee and their volunteers work tirelessly to 'bring their fun programme of events' to the residents and visitors of Cowdenbeath. With this year being their 40th they are looking to do some things differently. For example, there's going to be a TEA DANCE. Check out the Civic Week Facebook page to find out all the details of this and the rest of their events.

A. Haddow, Chairman



Some of Civic Week Committee at the Little Fix Concert at Beath High School in March 2018

***Like and share our Cowdenbeath Community Council Facebook page
Check out our website: www.cowdenbeathcc.org.uk***

THE MAXWELL CENTRE



WE ARE OPENCowdenbeaths' new community centre is open for business. The Maxwell Centre is located in Stenhouse Street on the site of the old Social Work and is named after Mary and Alex Maxwell. The new centre has meeting rooms, which can cater for all types of organisations, a good sized youth room, a learning kitchen to allow families to get key advice on making healthy diets, a function hall available for all sorts of family occasions such as weddings and birthday parties, an IT suite which has more than a dozen computers and a music room.

CCH VALETING & CAR WASH

UNIT 2, LANSCOT HOUSE, WOODEND BUSINESS CENTRE KY4 8ED

Tel: 07848158828

MINI VALET

Car £25

Small Van & 4x4 £30

Large Van £40

HGV £50

STANDARD VALET

Car £35

Small Van & 4x4 £40

Large Van £50

HGV £60

FULL VALET

Car £50

Small Van & 4x4 £60

Large Van £70

HGV £80

CAR WASH

Car £5

Small Van & 4x4 £6

Large Van £7

Camper Van £10

HGV £20





JANE KIRK

**164 HIGH STREET,
COWDENBEATH, KY4 9NH
MOBILE NO: 07754357120**

**OPEN TUES - SAT 11AM - 5PM
CHAIRS FOR RENT
CONTACT FOR MORE DETAILS**

COWDENBEATH HORTICULTURAL SHOW

This years show will be on Saturday, 8th September (2-4.30pm)
and Sunday 9th September (1.30-4.00pm) at Trinity Church.
Check out their Facebook page for up to date details.



Thanks to D Johnstone for the photos



BEAUTIFUL FIFE 2018

Its that time of year when Cowdenbeath Environment Group and their volunteers resume their work to prepare for the Beautiful Fife Campaign. They have already been up at the community woodland to do some litter picking. Their efforts meant that 50bags of litter had to be removed. They'll be firing up the lawn mowers soon for trimming the grass areas. Then they will be turning their attention to the planters and tubs in the High Street as well as the Millennium Garden and Dalbeath Marsh. And they would like to extend an open invitation to any like minded folks who would want to help out. Contact us on cowdenbeathcc@gmail.com and we will put you in touch with them. If you want Cowdenbeath to achieve the GOLD accolade, then more helpers are needed



THREEPOOL BOYZ
DETAILING

stevie mattie ronan
the clean team
07909705653
07850688565
07495304074

CUTTLEHILL FARM BEEF

**CUTTLEHILL FARM
CROSSGATES, KY4 8HD
(NELSON FAMILY FARM)**

**WHOLESOME HEARTY FOOD
LOCAL FARM FRESH**

**TO PLACE AN ORDER
PHONE 07889757423**

**DELIVERY FREE IN LOCAL AREA
EDINBURGH/GLASGOW CAN BE
ARRANGED**

**OUR FACEBOOK PAGE IS:
CUTTLEHILL FARM BEEF**

BEATH BARGAIN STORE

175 HIGH STREET



The owners of Beath Bargain store have been in Cowdenbeath High Street for over 29years. Their current store is an Aladdins Cave of products and well worth a visit.

If you're looking to do some redecoration in the house , then check out their aisles filled with a wide range of Do It Yourself products. Whether it be paintbrushes, nuts and bolts, rollers, adhesives, pliers, nails, duct tapes, paints, shower sprays, towel rails.....You name it, they've probably got it

Or what about their vast range of household goods.....pots and pans, ironing boards, dishes, tea towels, kitchen utensils and much more. They also have a range of small electrical appliances such as kettles, toasters, small heaters.

And if you're celebrating the birth of a new baby, why not check out their selection of gifts. However if you prefer to knit clothes for the newborn, check out their range of wools



CIVIC WEEK UPDATE

**COWDENBEATH GALA DAY PARADE
IS ON SATURDAY, 16TH JUNE**

AND THE THEME FOR THE GALA IS:



1978
1018

2017 GALA GALLERY



CIVIC WEEK

These are the details at the time of going to print. For up to date details on the programme of events for this week - check out the Cowdenbeath Civic Week Facebook page.

SATURDAY 9TH JUNE



AN AFTERNOON AT THE PALAIS

TEA DANCE

BEATH HIGH SCHOOL
From 14.00 - 16.00

Tickets only. Cost £2.00

Enjoy an afternoon tea, music from across the decades and have a dance and sing-a-long with Cowdenbeath Community Choir.

There will also be a free information event running alongside the Tea Dance for the more mature members of our community and those that support them

SUNDAY 10TH JUNE

EVENING SERVICE

at Cowdenbeath
North Church, 6.30pm

MONDAY 11TH JUNE

SCHOOLS 5-A-SIDE FOOTBALL

competition.
Cowdenbeath Leisure Centre
(6-8PM)

TUESDAY 12TH JUNE

CHILDRENS WATER DISCO

at Leisure Centre. 6.30 - 8.00pm
(2 x 45min sessions)
Tickets will be allocated on the night

CIVIC WEEK

PROGRAMME

WEDNESDAY 13TH JUNE

**WHEELBARROW
RACE**

Public Park,
Open to ALL, 7.00-8.30pm

GOLF TOURNAMENT
at Cowdenbeath Golf Club
in the morning

THURSDAY 14TH JUNE

PET SHOW

at Maxwell Community Centre,
6- 8.00pm. Free Entry.

BOWLS COMPETITION
at Bowling Green Street Bowling
Club. Local rinks playing

FRIDAY 15TH JUNE

This is the day, the Civic Week Committee and their volunteers 'run about like mad yins and lose sleep' just to make sure everything is okay for tomorrows Parade

SATURDAY 16TH JUNE

PARADE DAY

THE PARADE LEAVES WOODEND AT 12 NOON HEADING DOWN BROAD STREET, ONTO THE HIGH STREET, BEFORE HEADING UP TO THE PLAYING FIELDS AT LEUCHATSBEATH.

AND THEN...

HAVE FUN IN THE PARK WITH THE SHOWS, STALLS, RIDES, DANCE, MUSIC, 5-A-SIDE FOOTBALL FINAL, PONY RIDES, TRAMPOLINES. DINOSAURS..... AND MUCH MUCH MORE

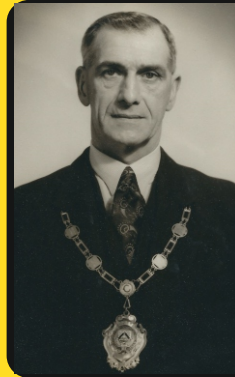
REMEMBER WHEN

NATIONAL COWDENBEATH DAY

Zoe Ball will be kicking off a Cowdenbeath Frenzy on Friday , 24th September, The Radio One Breakfast DJ and her team have declared that day National Cowdenbeath Day in honour of the towns football team The new Mrs Norman Cook's show has adopted the third division side as their team and will be relaying the club's fortunes to Radio One listeners throughout the season. Club Chairman Gordon McDougal was unsure why Zoe had picked Cowdenbeath but thought perhaps the name appealed.

And I think people had been writing in saying that rather than Rangers, Celtic, Arsenal and Manchester United, why not choose one of the less fashionable sides' he added. Tshirts – which will go to help the national Shelter charity – have been printed up declaring support of the side. But sadly, the nationwide publicity has not had any influence on Cowdenbeaths' home gates. It has certainly not made them any bigger, but then again they are not getting smaller either' added the chairman

extract from The Courier Sept 1999



**WILLIAM
EWING**

**PROVOST
OF
COWDENBEATH**

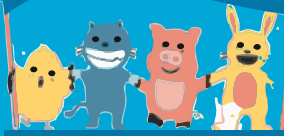
1952 - 1955

FACTORY FACTS

There have been various factories in the town over the years. Elliot-Automation opened at Woodend in 1963 at an advance factory. The building of the new Forth Rd Bridge helped attract the American business to come to Fife. Initially, they manufactured heavy duty butterfly valves. By 1967 they were producing computer and automatic control valves. By 1968 International Computers Ltd were producing a computer a day at Cowdenbeath (the Elliot 4100). Later, the business became Fisher Controls and in 1983 the factory was closed and all valve production was transferred to a new site in Kent where valves for the petro chemical industry were to be produced. Babygro also had a number of local factories. In Oct 1964, football legend Stanley Matthews came to Glenraig to open an extension to the Babygrow factory

courtesy of David Allan

JOIN THE COMMUNITY



Welcome to the Co-op Local Community Fund
Our Local Community Fund is our way of giving back

COWDENBEATH CO-OP

We have 3 very worthy causes to support in our local community. All you need to do is go online and pick your cause to support and spend your 1% on

5%
FOR YOU



1%
FOR THE COMMUNITY



FIFE YOUNG CARERS

We offer: Support for Young and Young Adult carers age 8-25years.

Individual support, Support groups
Residential and day trips. Information and advice. Raising awareness



FORMULA 24 FIFE

Mission: To help build fun, accessible and

career building opportunities in STEM activities and qualifications via Greenpower Formula 24 design, building and racing



APPAWS FOR AUTISM

What we stand for - Our Aims and Objectives. We set up our organisation due to the lack of effective health, social and educational services for people living with and dealing with Autism. We are based in Fife and cover the whole of the Kingdom of Fife, but we support families all over Scotland. Our work with therapy dogs does however require visits to other areas of Scotland, ie schools, universities, airports...etc. We aim 'to promote a balanced, effective, non discriminatory, fair and equal service to all with an Autism spectrum condition and their families

CAN WE IMPROVE OUR LOCAL COWDENBEATH CO-OP

For just popping into our store and using your members card, you can have your say on your own store. We need to know how we can improve if we are doing a great job and what you want from our team. So next time you are in, check the back of your receipt and get filling in that survey or use the store code 8904. You could also win £250 worth of vouchers for doing so.



46th Fife Scout Group



You might think that Scouts are for Geeks or Freaks but it is the complete opposite. They are just a group of young people from the streets with nothing to do on a Wednesday night. Scouts is a great way of making friends and mind blowing experiences. You can make so many memories together which

will last a lifetime. Scouts will give you opportunities so much more than you can imagine. There are always places for you. The Scout Troop goes on trips and camps every 2 years. They go on either an international trip or attend a large camp. They do lots of fun things like Cooking/Baking/Camping/Sledging/Hammocking to name but a few activities. Why not pop along to their Scout Hut in Wemyss Street, Cowdenbeath and see what they do

BEAVERS Mondays 5.45-6.45pm

SCOUTS Wednesdays 7.00-8.30pm

CUBS Mondays 7.00-8.00pm

EXPLORERS Wednesdays 7.30-9.30pm

LIGHTING ON THE HIGH STREET

Last year, a change was made to fit LED lamps, in to the existing lanterns on the High Street. The 'new' lighting was to standard, but residents raised concerns about how dark it was in the High Street since the 'new' lighting was installed. The matter was raised with Fife Council and it was agreed to install LED gear trays with a specially designed distribution into the existing decorative lanterns. The changes took place towards the end on March and comments from folks indicate the High St is brighter.

THE 4 WINDS TRUST

If your group is looking for funding, remember the 4 winds trust . The trust is a charitable organisation created to administer the distribution of funds provided by the Little Raith Windfarm. The Trust will support constituted groups within the Cowdenbeath, Auchtertool, Lumphinnans and Lochgelly communities and any project which is for public benefit and which will improve the quality of life for local residents. The Trustees meet every quarter to discuss applications. Check out their website to see if your group satisfies their criteria and if it does, submit an application.



SAFER COMMUNITIES TEAM

The safer communities team at Fife Council works to deliver community safety across Fife. Community Safety covers a range of issues including crime, anti-social behaviour, public perception of crime and safety in our homes and on our roads. Within the Safer Communities team, there are dedicated officers who work in partnership with other Fife Council Services and organisations to make people feel safer and reduce crime, its causes and the fear of crime whilst also improving the local environment. Some of the areas covered by the Safer Communities Team are :

DOGS - Safety Communities Officers are responsible for dealing with dog fouling complaints

ANTISOCIAL BEHAVIOUR, Neighbour Problems, Vandalism, Graffiti
ENVIRONMENT - fly tipping, litter, illegal dumping and abandoned vehicles.

HOME SAFETY AND SECURITY - Safer Communities offer a range of FREE safety and security visits which can be arranged directly or on behalf of a relative

Contact Details: Telephone No 01592 583642

Email: safertools.officers@fife.gov.uk

ALSO CHECK OUT: www.fifedirect.org.uk/safertools

THE CLEARING

A recently formed group called The Clearing have just started renting 239 High Street (formerly the Whats Your Beath office). During the next few months, the hope is a number of other Cowdenbeath groups will begin to use this community space. The Street Pastors have already starting using it by providing a safe space for anyone in need of any kind of help on the High Street. The street pastors provide a refuge, a place to sit and chat, receive first aid, enjoy a cuppa and benefit from a listening ear, or a dry place to eat your takeaway when its raining or cold outside, etc. The Clearing will also provide an informal time of Christian prayer, friendship and spiritual renewal on Sunday mornings and at various times during the week. "

MOSSMORRAN WINDFARM COMMUNITY FUND MICRO GRANT SCHEME

Cowdenbeath Community Council received the sum of £2000 from the Mossmorran Windfarm Community Fund to operate a Micro Grant Scheme within the community councils' boundaries. Individuals and groups were invited to apply to the Scheme during the month of February. The Community Council received a total of eight applications...which was great. The undernoted are the successful applicants. **Congratulations to them all.**

Lumphinnans United
Alicia Howatt
Homestart - Cowdenbeath

Trinity Tots
Fife Colts
46th Fife Scouts

Cowdenbeath Martial Arts
Social Eyes Fife

The main fund is due to open again around August time. Any group looking for funding should check out Foundation Scotland's website for the details.



Foundation
Scotland



The Scottish Parliament
Pàrlamaid na h-Alba

Constituency Surgeries 2018

Annabelle Ewing MSP Office, Cowdenbeath

at

12:00-13:30

on

Friday 22nd June

Friday 13th July

Friday 14th September

Monday 22nd October

Friday 9th November

**ANNABELLE EWING MSP for the
Cowdenbeath Constituency**

E-mail: Annabelle.Ewing.msp@parliament.scot

Phone: 01383 611067

Address: 253-257 High Street, Cowdenbeath KY4 9QF

HOMESTART - COWDENBEATH

Homestart - Cowdenbeath have opened their offices at 170 High Street, Cowdenbeath (the Cake Fairy's previous premises). Their home visiting support is offered within the Cowdenbeath Area for families with children under 5 years. A friendly and caring person will visit weekly offering support and a befriending service. Volunteers are a vital part of the service given and Homestart would welcome anyone who would like to find out more about volunteering. If interested, give them a call on 01383 510010.



*A Child's early years are critical to their future
Homestart helps families give their children the best start in life*



SOCIAL EYES FIFE

Social Eyes Fife is a group welcome to anyone in Fife who has any kind of eye condition or visual impairment.

The group meets in The Maxwell Community Centre, C/Beath every 2nd Wednesday.

Come along and join us to socialise and support each other and feel free to bring along a friend, family members or carer.

The address is The Maxwell Centre, Stenhouse St, C/Beath



Morrisons (Cowdenbeath) Car Park
10AM - 2PM

The last **SUNDAY** in every month
(March - November) **£5.00/Car**
Book in advance/Turn up on the day
Contact L Calder -01383 513446 for
more info.

ALL WELCOME

A WEE BIT O' FUN

				8			
		4			9	1	
						9	4
5	6						
9					4		1
2				1	3		
			6				7 5
3	5		7	2			6
		2					

RECYCLING CENTRE

With effect from 2nd April 2018, most recycling centres in Fife will be closed 1 or 2 days a week and will also close for lunch. **COWDENBEATH RECYCLING CENTRE** will be closed on Mondays and Thursdays as well as closed for lunch between 12.45 - 13.00. There are another 10 recycling centres in Fife and the opening times are detailed below.



Recycling Centre	Day (s) Closed		Lunch Break
COWDENBEATH	MONDAY	THURSDAY	12.45 -13.30
LOCHGELLY	TUESDAY	FRIDAY	12.00 – 12.45
DALGETY BAY	WEDNESDAY	FRIDAY	12.00 – 12.45
DUNFERMLINE	Open all	Week	Open over lunch
GLENROTHES	WEDNESDAY		12.00 – 12.45
METHIL	THURSDAY		12.00 – 12.45
KIRKCALDY	TUESDAY		12.45 – 13.30
ST ANDREWS	TUESDAY	FRIDAY	12.45 – 13.00
PITTENWEEM	MONDAY	WEDNESDAY	12.00 – 12.45
CUPAR	MONDAY	THURSDAY	12.00 – 12.45
LADYBANK	Open all	Week	Open over lunch

For more information, check out <http://www.fifedirect.org.uk/recyclingsites>