

THE
**BEATH
BULLETIN**



ISSUE 10

JUNE 2019



is coming to Cowdenbeath

MESSAGE FROM THE CHAIRMAN

What a year it's been. Work on the Town Centre Development began around July last year. There has been a lot of disruption but things are taking shape. We have an upgraded 'green square' and it's looking good. Hopefully groups will come forward to organise some "pop up" events on the square. The Civic Week committee used the location for their Christmas event and it was packed. Over 500 folks



in attendance. And what about the heritage garden at Brunton Square. We have our giant mural....painted by the talented Kerry Wilson....now we have the seating and paving area completed. Next up will be plinths detailing some mining information and then the



railings will be revamped. '. Oh and not forgetting the Community Council secured money from Awards for All and Kerry will be working her magic on more of the shutters within the Town as well as creating some mini murals like the one at the Leisure Centre. And finally, there are a group of residents who have volunteered to sit on the Coalfields Regeneration Trust Steering Group and they aim to work with local groups to drive forward Cowdenbeath's Action Plan

Alex Haddow

*Like and share our Cowdenbeath Community Council Facebook page
Check out our website: www.cowdenbeathcc.org.uk*

CIVIC WEEK UPDATE

**COWDENBEATH GALA DAY PARADE
IS ON SATURDAY, 15TH JUNE**

AND THE THEME FOR THE GALA IS:

Mardi GRAS

2018 GALA GALLERY



CIVIC WEEK

These are the details at the time of going to print. For up to date details on the programme of events for this week - check out the Cowdenbeath Civic Week Facebook page.

SATURDAY 8TH JUNE



TEA DANCE

BEATH HIGH SCHOOL
From 14.00 - 16.00

Tickets only. Cost £2.00

*Tickets can be purchased
from Precious Events/Lucie
Sue Gifts (at the Fountain)
& Barnardos*

**Enjoy
afternoon tea,
music
and dance.**

SATURDAY 8TH JUNE

SUNDAY 9TH JUNE

CARE HOME VISITS (8TH)

The Royal Party will be visiting local Residential Care Homes.

EVENING SERVICE (9TH)

at Cowdenbeath
Baptist Church 7.00 pm

MONDAY 10TH JUNE

WHEELBARROW RACE

Public Park,
Open to ALL, 7.00-8.30pm

TUESDAY 11TH JUNE

CHILDRENS SWIMMING/INFLATABLE FUN SESSION

at Leisure Centre. 6.30 - 8.00pm
(2 x 45min sessions)
Tickets will be allocated on the night

PROGRAMME

WEDNESDAY 12TH JUNE

JACKIE ALLAN 5-A-SIDE FOOTBALL TOURNAMENT

(for Primary Schools)
Cowdenbeath Leisure Centre
4.00 - 6.00PM

**MARY MAXWELL
GOLF TOURNAMENT**
at Cowdenbeath Golf Club
(contact club direct for details)

THURSDAY 13TH JUNE

PET SHOW

at Beath High School
6- 7.30pm. Free Entry.

BOWLS COMPETITION
at Lumphinnans Bowling Club.
Local rinks playing
5.00 - 7.00PM

FRIDAY 14TH JUNE

This is the day, the Civic Week Committee and their volunteers 'run about like mad yins and lose sleep' preparing the floats and making sure everything is okay for tomorrow's Parade

SATURDAY 15TH JUNE

PARADE DAY

**THE PARADE LEAVES WOODEND AT 12 NOON HEADING DOWN
BROAD STREET, ONTO THE HIGH STREET, BEFORE HEADING UP
TO THE PLAYING FIELDS AT LEUCHATSBEATH.**

AND THEN...

**HAVE FUN IN THE PARK WITH THE SHOWS, STALLS,
RIDES, DANCE, MUSIC, 5-A-SIDE FOOTBALL FINAL, PONY
RIDES, TRAMPOLINES. DINOSAURS.....
AND MUCH MUCH MORE**

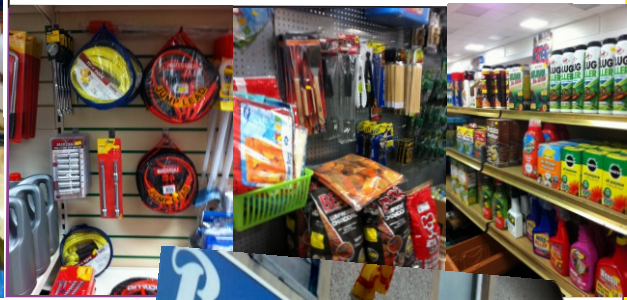
BEATH BARGAIN STORE



DIY
Paint Brushes
Duck Tape
Masks
Paint

HOUSEHOLD
GOODS
Duvets, towels,
ironing boards,
cushions

ELECTRICAL
GOODS
Slow Cookers,
Deep Fat Friers,
Electric Kettles



Do you have a car, then why not drop into BEATH BARGAIN STORE and check out what car accessories we have in stock. We have L plates, frost protectors, jump leads....and much more

And with the better weather and lighter nights coming in..why not check out our gardening and barbeque sections.

We have aisles packed with loads of DIY and household goods that you might need., so why not POP IN - we'd be HAPPY to see you



The store is in LOCATED at 175-179 High Street. There's a bus stop outside and on street parking round the corner in Union Street.

COALFIELDS REGENERATION TRUST



the coalfields
regeneration trust

The Coalfields Regeneration Trust (CRT) is an organisation dedicated to supporting former coal mining communities (such as Cowdenbeath). The CRT in Scotland is mainly funded by the Scottish Government, and their overarching priority is to develop community capacity. Everything they do is about supporting coalfield communities.

CRT works in the heart and soul of our coalfield communities, by investing resources, expertise and knowledge to ensure local people are able to fulfill their potential.'

COALFIELDS COMMUNITY FUTURES

The Coalfields Community Futures Programme is an approach to local community planning and sustainable community development that aims to encourage active citizenship and build local democracy. It enables communities to devise a community action plan which makes a case for the things that the community thinks are important and wishes to make happen. To support the action planning process the community receive a Participatory Budget which is available to local constituted community or voluntary groups. This budget enables the community to fund small projects that are identified by the community through the results of household surveys, stakeholder interviews and the Community Open Event. In January 2019, applications were submitted by local groups for funding for projects within Cowdenbeath. All applications were voted on at a Community Event held at Beath High School on 26th January 2019. There were over 300 people in attendance at the event and as a result of the voting 12 projects were successful in their applications.

And they were:

Olivers Army Assistance Dogs - Assistance Training Project

Maxwell Centre Advisory Group - Graffiti Boards & Community Food projects

Families affected by Autism - The FABA plan 2019

Cowdenbeath Civic Week - Event Bank

Cowdenbeath Community Council: Regeneration & Mural, Wooden Sculpture Nature Trail, Mens Shed and Communications Projects

Love 2 Dance - New Equipment

The Clearing - Community Awareness Team

The Salvation Army, Cowdenbeath - Equipment for community sessions

Broad Street Bowling Club - New Equipment

COALFIELDS COMMUNITY FUTURES

Over the last year, there has been over 500 Community Household Surveys completed representing the views of over 1700 residents. There was also an event at the Maxwell Centre for folks to attend and give their views. As well as the 300 people who turned up at the Voting Event in Beath High School. All the comments and information obtained via these methods have been turned into a Community Action Plan for Cowdenbeath.

Some of the shared visions for our Community are:

- For everyone to be proud of their Town.
- To make Cowdenbeath more attractive both aesthetically as well as appealing in the activities and resources we provide for people of all ages
- To see it continue to grow as a community where young, middle-aged and older people can live in harmony and enjoy all aspects of Cowdenbeath
- To have a closer community with good support networks and affordable, accessible and safe amenities.
- To have a bright, bubbly, busy and vibrant place
- To have a neat, clean and bustling high street, clear of derelict buildings, no empty shops, and a facility for the business youth to try out their ideas.
- To have well maintained traffic flow, parking and planning to develop access to amenities and local economy
- To make it a better community to live and work in and people helping each other



FROM OUR KIDS PERSPECTIVE

Pupils from Foulford Primary School, Cowdenbeath Primary School and St Brides RC Primary School made their contribution to the Community Plan by completing their own questionnaire which asked pupils: what thing do you like to do?, What hobbies do you have?, What do you like about living in Cowdenbeath? What would you like to see happening in the future?

216 pupils took part and the results give an insight to the thoughts and feelings of our young residents.

Anti Social behaviour and littering are top of the young peoples dislikes with friends and skate park top of their likes.

Looking to the future the three most important issues for our young people are:

- **Improving play facilities**
- **Improving local environment**
- **Less anti-social behaviour from all ages.**

COMMUNITY SURVEY RESULTS

RESIDENTS QUOTES **LIKES**

Lovely green spaces for all ages to enjoy.

Civic Week Committee, Shop fronts, mural at the side on Brunton House and new mono blocking.

I like the new skate park as it keeps people out of trouble.

Lots of sports facilities and nice pool areas. There is a good gym facility.

I like all the improvements over the last few years.



It's a lot nicer to go down the High Street as there are a good variety of shops.

RESIDENTS QUOTES **DISLIKES**

Lack of traffic wardens especially on the High Street. Drivers parking on pavements and dangerously on street corners, lack of disabled bays on the High Street.

Parks are usually full of broken glass bottles and also dogs dirt lying on the footpaths.

Derelict buildings on the High Street.

Lack of opportunities for older people to help combat social isolation and loneliness

Not enough investment in local parks or childrens activities. Not enough shops



COWDENBEATH'S COMMUNITY ACTION PLAN

The following are the main strategies and priorities the community will work towards achieving in partnership with public agencies and other supporters

THEME 1 – High Street

Explore potential use of empty and derelict buildings

Continue to improve the character of the High Street

Improve Lighting on the High Street

Increase number of cafes and restaurants open in the evening

Improve information/communication regarding what the town has to offer.

THEME 2 – Local Roads and Traffic

Potholes on High Street and elsewhere in the Town

Speeding Drivers

Enforce parking restrictions such as double yellows, disabled bays, bus stops...etc.

THEME 3 – Community Facilities and Activities

Explore financial barriers to improve access to facilities such as Leisure Centre, Maxwell Centre, Astroturfs, Community Use @ school, afterschool clubs...etc

Increase range of activities and facilities for all ages from very young, to teens and older people

Offer more support groups for people suffering isolation, mental health issues, etc.

GP surgeries and schools are over capacity and this needs to be addressed

Find ways to encourage young people to get involved and develop activities for their age groups

A wider range of community activities for all ages is required

Parks/greenspace need cleaned up and redeveloped to encourage use

THEME 4– Civic Pride

Look at ways of involving more people in improving the town and having more pride in their community

Improve gateways to the town to give better impression to visitors

Litter, broken glass and dog fouling need to be addressed

Drug and alcohol issues are a growing problem in the community

Crime is a growing concern and community safety is an issue

Vandalism and anti-social behaviour is an issue

CO-OP COWDENBEATH

Dalbeath Crescent
KY4 9RN
01383 610089

Find us on Facebook. "co-op cowdenbeath". Follow our page for activity happening instore. You can also find us on our new twitter page. @coopcowdenbeath give us a follow.

We would like to welcome everyone into our store. We are a small convenience store that provides all your needs. Paypoint, lottery, cigarettes, alcohol, grocery and chilled foods. If you haven't been in before, pop in and have a wee look. We are a very happy team that want to do the best for our community



5%
FOR
YOU

+

1%
FOR YOUR
COMMUNITY

**YOUR STORE
YOUR SAY**

Ten £250 vouchers are up for grabs each month

let us know what you think of your store, see the reverse of your receipt for more details

Don't forget to have your say in store! We need this feedback to help us be the best convenience store for our community. If there is anything we can improve, we need to know. So please fill out the surveys online. You will find the link on the back of your receipt. Thank you.

REMEMBER WHEN

A BOMBSHELL

Remember the keps (or caps) that boys used to love shooting off in their toy guns? In 1933, some boys in Foulford area were playing with a toy known as a bombshell. It was a hammer-head shaped piece of iron with a slot to hold a kep. Drop it onto the group and the kep explodes. The boys dropped the bombshell on a manhole lid without knowing that there was a build up of coal gas in the sewer. There was then a loud explosion and the houses nearby shook. Stones were propelled out of the manhole and flames came out of another manhole around a 100yards away. One of the boys had his hair singed and his eyebrows scorched.

Article, courtesy of D Allan (local historian)

1989

The YM/YMCA closed their Cowdenbeath base in Pit Road.

Stock car racing returned to the Town at Central Park.

Beath Junior High School closed at the end of 1988/89 session

Shopping in Cowdenbeath





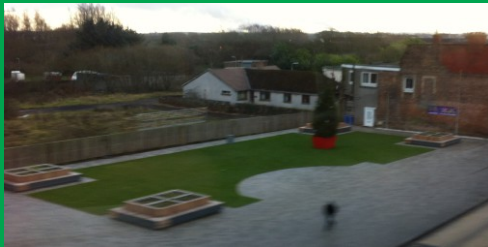
DOG FOULING

One of the biggest complaints in our community is that of Dog Fouling. It is an offence not to appropriately dispose of any excrement immediately after a dog has fouled in a public place. If someone does not clean up after their dog then they could receive a Fixed Penalty Notice with a fine of £80. Did you know that the Safer Communities Officers are responsible for dealing with Dog Fouling Complaints. You can report someone for not cleaning up after their dog



Contact Safer Communities
01592 583642

GREEN SQUARE



What do you think of our new Green Square ? . Local groups (including the community council, civic week committee, environment group) have been working in partnership with Fife Council and Sustrans over the last year to transform 'the green square'. Sustrans is a charity that works closely with communities and local

authorities to ensure that people have access to a network of safe walking and cycling routes. They are trying to make Scotland a healthy, happy place to live, work and play. The development of the High Street (including the green square) has cost over £1m with nearly £700k being funded by Sustrans. As well as providing a more formal greenspace where people can sit and enjoy and give them a reason to spend more time within the town centre, the hope is that local people will also be encouraged to hold year round activities whether it be events, shows or markets. The Towns' Civic Week Committee were the first to use the newly developed Green Square for their Christmas Lights Switch on event and it went down a treat. Hopefully more events can be organised and be as well attended.

HERITAGE GARDEN



A few groups within Cowdenbeath (including the community council and the environment group) have been working with Fife Council to create a heritage garden within the town. Funding was obtained from Fife Environmental Trust, the design of the garden was done, consultation with residents was conducted and the creation of the garden was scheduled alongside the development of the High Street. The aim of the garden was to create a place where folks can rest, reflect and hopefully share memories of Cowdenbeath's history and heritage across the generations. The first stage of the garden project was the painting of the giant mural which is on the side of the building. Next came completion of the seating, paving and planting areas. We are now waiting on heritage information plinths arriving as well as decorative fencing being installed. Can't wait till it's all completed



The Scottish Parliament
Pàrlamaid na h-Alba

CONSTITUENCY ADVICE SURGERIES

Friday 7th June 2019

Friday 12th July 2019

Friday 20th September 2019

Monday 28th October 2019

12 noon - 1.30pm

Constituency Office, 253-257 High Street
Cowdenbeath, Fife, KY4 9QF

All welcome, no prior appointment necessary.

Annabelle Ewing MSP - Member of the Scottish Parliament for Cowdenbeath

Email: Annabelle.Ewing.msp@parliament.scot - Tel: 01383 611067



Vandalism at
Community Woodland

NOT SO BEAUTIFUL COWDENBEATH 2019

Normally we would wax lyrical in this report about the Beautiful Fife Campaign 2019 and the efforts the Cowdenbeath Environment Group and their volunteers would be making to try and achieve the Gold Award. However, this feature is focussing on the vandalism that is happening on our doorstep. Sadly there

seems to be some folks within the town who don't want Cowdenbeath to be an attractive place to live in. The Community Woodland is a lovely area but members of the Environment Group have found that there's a continuation of 'setting fire to wheelie bins'. Added to that, there is now evidence that motorbikes and quads are being used in the woods. The volunteers will soldier on with their maintainance programme but it is soul destroying for them. Especially since they are low on numbers. If you are interested in making Cowdenbeath an attractive place to live in and want to help, then get in touch at cowdenbeathcc@gmail.com and we will forward your details on.

ART SCULPTURES

The Community Council has been successful in their applications to both the Mossmorran WindFarm Community Fund and Coalfields Regeneration Trust for funding to purchase wooden art sculptures to create a trail within the Town. The aim is to work with the schools/scouts to identify what carved animals they would like to see at the gateways to the Town as well as in other areas of Cowdenbeath



A WEE BIT O' FUN

				8				
		4			9	1		
						9		4
5	6							
9					4			1
2				1	3			
			6				7	5
3	5		7	2			6	
		2						

COWDENBEATH RECYCLING CENTRE

From Oct - Mar, the centre is open between 09.00 - 5.00pm &
From Apr - Sep, the centre is open between 09.00 - 5.45pm

Monday	CLOSED	
Tuesday	09.00 – 12.45	13.30 – 17.00
Wednesday	09.00 – 12.45	13.30 – 17.00
Thursday	CLOSED	
Friday	09.00 – 12.45	13.30 – 17.00
Saturday	09.00 – 12.45	13.30 – 17.45
Sunday	09.00 – 12.45	13.30 – 17.45

Here are details for other local recycling centres

RECYCLING CENTRE	Day (s) Closed	Lunch Break
Lochgelly	TUESDAY & FRIDAY	12.00 – 12.45
Dalgety Bay	WEDNESDAY & FRIDAY	12.00 – 12.45
Dunfermline	Open all week	Open over lunch

For up to date information, check out <http://www.fifedirect.org.uk/recyclingsites>